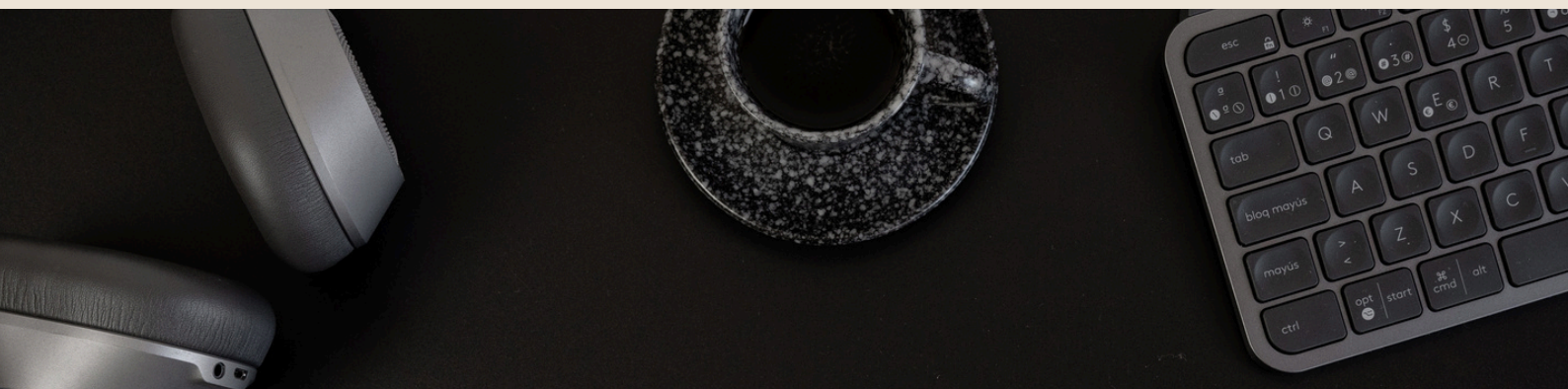




Conference Package



20
25



About Us

Marybrooke is nestled on the edge of the majestic Sherbrooke Forest in the Dandenong Ranges. This magnificent National Trust listed reception centre and guesthouse is the perfect one-stop destination for your next meeting, conference, training session, workshop or corporate retreat.

Built in 1940, Marybrooke began as the grandest guesthouse in a chain of six guest houses all using the prefix "Mary" designed and built by Eric Dowdle between 1927 and 1940. It is registered as a socially, historically and architecturally significant property.

Over recent years Marybrooke has undergone extensive renovations to restore and reinstate the building to reflect its original charm and elegance.

Marybrooke Manor offers you and your clients the following facilities:

- 5 meeting rooms of varying sizes, catering for up to 120 delegates.
- All of our conference rooms have plenty of natural light, beautiful garden outlooks and block-out blinds.
- 20 guest rooms within the Manor, with a capacity of 30 guests twin share.
- The residence, featuring large lounge & dining area, billiard table, outdoor entertaining area plus ability to sleep 6 guests.
- All accommodation rooms have been recently refurbished to a four-star standard and include breakfast in the rate.
- PJ's Restaurant, available for private hire year-round. Relax in front of the open log fire and soak in the old-world charm while enjoying a meal and drink with colleagues.
- Extensive gardens and the "wine garden", perfect for working or relaxing outside.
- Complimentary WiFi throughout the whole venue, including meeting rooms and accommodation.
- Ample free car parking – and easy access for buses.

Most importantly we can offer exclusive use of the venue as we only host one corporate event at a time. Marybrooke Manor is located less than 60 minutes from the Melbourne CBD, allowing you and your delegates to benefit from a fresh, calming environment of the country without the long drive.

Packages & Inclusions

All of our conference and meeting packages include the following as standard:

- Projector & screen
- Lectern and microphone & additional handheld cordless microphone
- Standard whiteboards &/or Flipcharts with markers
- Complimentary WiFi access
- Your own dedicated conference manager for the duration of your meeting
- Pads, pens, mints & water

Full Day Package \$75 per person

Inclusions:

- Full day meeting room hire (8 hours)
- Fresh fruit, tea, coffee and juice on arrival and available throughout the day, morning and afternoon tea
- Gourmet a seated or working style lunch including a range of hot and cold buffet options
- Pads, pens, mints and water at each place setting

Half Day Package \$55 per person

Inclusions:

- Half day meeting room hire (4 hours)
- Fresh fruit, tea, coffee and juice on arrival and available throughout the day
- Morning tea OR afternoon tea
- Gourmet seated or working style lunch including a range of hot and cold buffet options
- Pads, pens, mints and water at each place setting

Accommodation \$220 per room 'run of house' special corporate rate

We have 20 single share accommodation rooms with their own ensuites catering for 20 guests single share or 30 guests twin share. A fully cooked breakfast with continental items is included for all guests who stay overnight.

Optional Extras

- Three course evening meals can be provided for \$75 per person plus beverages.
- Upgrade to our premium tea and coffee package for an extra \$10 per person. This includes espresso coffees and specialty teas from the Yarra Valley Tea Co.
- Add platters for an extra \$10 per person. Options include Italian Anti-Pasto, Greek, Asian or seasonal fruit platters.
- A range of gourmet, team-building and tourist experiences are available through our local partners can be arranged (inc. wine tastings, Puffing Billy, ropes course, bushwalking, etc.). Please contact us to discuss the options and provide a quote.



Meeting Rooms



Dining Room

This is our largest function room located on the ground floor. The Dining Room is elegantly designed, with large windows providing plenty of natural light. It is ideal for groups of up to 120 set in theatre style or 110 set in banquet style.



Conference Room

Located on the first floor but with wheelchair access, the Conference Room is the perfect private meeting space with plenty of room for break out activities. It can cater for groups of up to 120 set in theatre style and suits larger groups very well.



Sherbrooke Room

The Sherbrooke Room is a more intimate space. Immediately next door to the Conference Room and containing its own bar, it is ideal for groups of up to 18 delegates seated in a U shape, meals and networking opportunities. This is also the ideal space for smaller conference groups of up to 50 people.



The Lounge

The Lounge is located on the top level and offers delegates the opportunity to break into a small discussion group. The Lounge is perfect for groups of up to 12 to meet in a more private and relaxed setting by the fireplace.

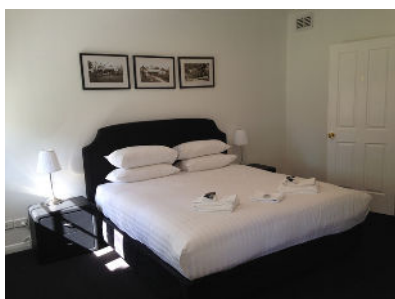
Room Capacities								
Room	Dimensions	Theatre	Banquet	U-Shape	Classroom	Cocktail	Board	Caberet
Grendon room	135m ² (9m x 15m)	120	110	40	100	150	-	60
Conference room	135m ² (9m x 15m)	120	100	30	100	150	-	60
Sherbrooke room	72m ² (8m x 9m)	50	50	18	30	50	20	30
The Lounge	32m ² (4.5m x 7m)	-	-	-	-	-	12	-

Room layouts are highly customisable to suit your specific requirements

Accommodation

Marybrooke Manor offers 20 lovely 4 star queen, king and family accommodation suites that can sleep up to 20 people single share and 30 people twin share.

All suites include a private ensuite, heating and air conditioning, tea and coffee amenities, flat screen televisions, complimentary WiFi, deluxe mattresses and memory foam pillows.



Family Room (2 available)

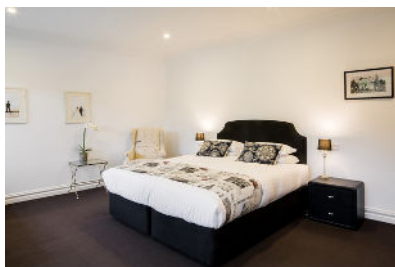
The Family room is our largest accommodation room. The room has a double bed and two single beds.

Executive King Room (1 available)

The Executive King Room is our next largest room, containing a king size bed and sofa to relax and unwind.

King and Single Room (2 available)

This room contains a king size bed and single bed.



Standard King Room (6 available)

This room contains a king size bed and all of the standard features you come to expect.

Queen Room (7 available)

This room is slightly smaller than the King Rooms and contains a queen size bed.

Disability Room (1 available)

This Queen size room has been modified to suit a guest with a disability and includes easy wheelchair access and modified bathroom.



Apartment (1 available)

Our ground floor apartment has three bedrooms (one with a king size bed and the other two with two singles in each), a shared bathroom and lounge room.

The Residence (1 available)

Self contained 2 bedroom apartment with large lounge area & billiard table complete with outdoor deck and furniture. Ideal for entertaining.



Menu Options

Full day package & Half day package

Morning tea - please choose two

- Scones, jam & cream
- Chocolate brownies
- Assorted muffins
- Carrot Cake
- Banana cake
- Assorted mini quiche
- Assorted savoury scones
- Assorted mini pies



Lunch

**Either a selection of sandwiches & wraps accompanied by a fruit platter
OR**

your selection of TWO from the following:

- Traditional Caesar salad with grilled chicken tenderloins
- Tri-coloured gnocchi in a rocket pesto cream sauce
- Homemade lasagne served with a garden salad
- Butter chicken on jasmine rice
- Slow cooked lamb on a spinach & sweet potato mash
- Quiche lorraine or vegetarian quiche

Afternoon tea - please choose two

- Homemade cookies
- Scones, jam & cream
- Assorted muffins
- Carrot Cake
- Banana cake
- Assorted mini quiche
- Assorted savoury scones
- Assorted mini pies



Menu Options

Evening meals - 3 course limited choice a la carte

Please select 2 for alternative drop from each course



Entree

- Roast pumpkin soup with sour cream and croutons
- Panko crumbed prawns with rocket salad
- Beetroot bruschetta with Danish fetta, rocket & Italian glazed balsamic
- Tri-coloured gnocchi in a rocket & pine nut pesto sauce served with shaved grana pandano
- The Manor's chicken caesar salad with bacon and grana pandano
- Pulled beef on potato rosti with tomato rosti & micro salad
- Pumpkin, feta & sun-dried tomato arancini

Main

- Panko crumb chicken breast stuffed with herb butter served with a creamy avocado sauce
- Slow cooked beef cheek with smashed new potatoes, greens, roast pumpkin and red wine jus
- Slow cooked pork belly with pumpkin puree, greens and apple cider jus
- Crispy cajun salmon on jasmine rice with stir fried mixed seasonal greens and fresh lemon butter sauce
- Braised lamb shank with spinach and sweet potato mash, greens and Mediterranean sauce
- Herb crusted barramundi served on garlic mash with carrots, broccoli and lemon butter sauce

Dessert

- Linz Belgian chocolate tart with berry salsa
- Warm apple pecan pie with double cream and maple syrup
- Sticky date pudding with butterscotch sauce and double cream
- Banana & caramel banoffee with rich caramel sauce & nut praline
- Vanilla panna cotta with toffee shards
- Creamy cheesecake with black cherry sauce

Customised menus can be designed upon request and dietary requirements can be met when advised in advance.